

Professional hygiene technology



The clean solution

# MEIKO TopLine

Washer-disinfectors





## FOR SEAMLESS, EFFORTLESS, CONTACTLESS OPERATION

Selecting an appliance from the new MEIKO *TopLine* range gets you more than a simple washer-disinfector. We provide a clever helper to support you in your day-to-day work in all kinds of ways.

Selecting, confirming and starting the right programme? The MEIKO *TopLine* can do that. Hands full when you want to open the wash chamber door? No problem! It's contact-free. Short on time between patients? With the MEIKO *TopLine*, you can see from a distance whether the care utensils are ready to be unloaded.

We listened to people who work in the field to help build a picture of the whole cleaning and organisation process, including critical points. We then focused in on them to drive our innovations.

All so people and machines can work together flawlessly. Without breakdowns. Without worries. Without hygiene risk.



### WHAT TO EXPECT:



A new smart assistant system with **LOAD DETECTION** and automatic door opening and closing (both optional) – to save work and time



An optimised **CLEANING SYSTEM** with a new wash mechanism and higher pressure – to boost cleaning performance and efficiency



An intuitive **OPERATING CONCEPT** with glass operating panel and signal concept – to improve safety and effectiveness



**CONNECTIVITY** using the *MEIKO Connect* app – for simple monitoring and validation



Improved **SAFETY** with an adjustable  $A_0$  value of up to 12,000 and many more features – to fulfil current and future requirements

The tried-and-tested **ALL-ROUND CAREFREE PACKAGE** from MEIKO – including chemicals, service and planning



## YOUR SMART ASSISTANT

This new feature from MEIKO suggests the correct cleaning programme for the care utensils loaded and then starts it automatically after a few seconds.

All that remains is to quickly check the screen, then you can get back to concentrating on your patients.

### Advantages of the new load detection feature:

- Saves time and makes work easier for the care team
- Reduces operator error
- Minimises risk of contamination (esp. via hands)
- Barely any need to touch machine
- Reduces operating costs

## CONTACT-FREE OPERATION

As well as providing automatic door opening and closing (optional) we have removed the final points of contact with the machine: doors can be opened and closed with no contact – different versions use either a hand sensor or foot switch (optional) for when you have your hands full.



The MEIKO *TopLine* automatically selects the right programme depending whether urine bottles, a bedpan or both have been loaded.

\* The option "Load detection" is available for selected holders and care utensils. To ensure the compatibility and a valid cleaning and disinfection process, please discuss the configuration adapted to your requirements beforehand with your MEIKO specialist.



## FEATURING A NEW MECHANISM AND HIGHER PRESSURE

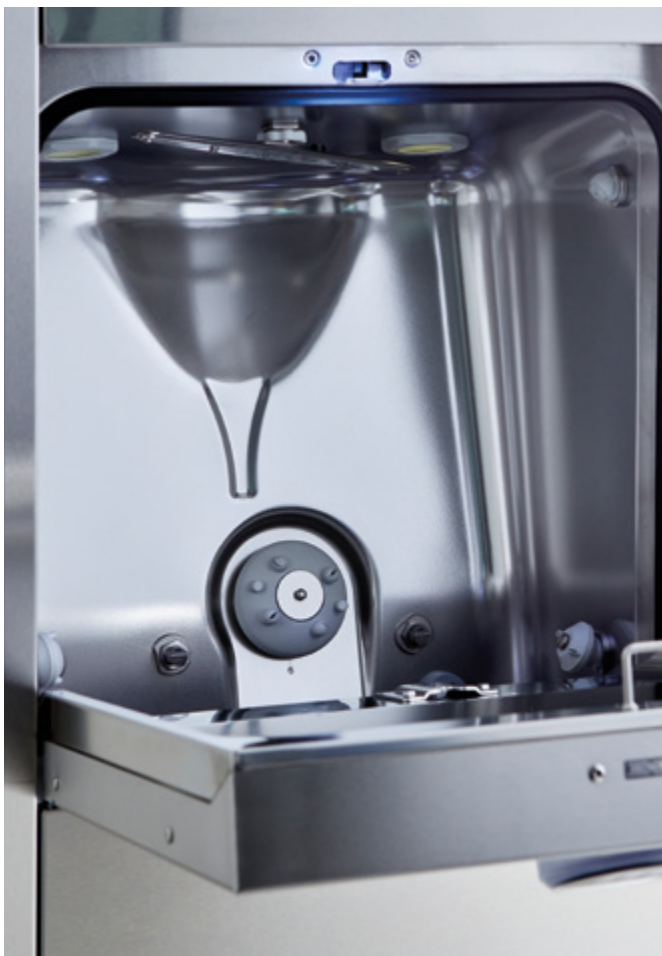
The cleaning performance delivered by the new generation of MEIKO *TopLine* appliances is a significant step up from previous models. And that is achieved with minimum noise and short programme times.

As well as high water pressure, the nozzles have been optimised in terms of material, positioning, shape and number. There are actually fewer overall, which reduces maintenance needs. Yet, they are perfectly shaped and positioned, meaning they are still even more effective.

Even the wash chamber features several innovations: an additional wash arm on the ceiling to clean the outside of the care utensils. Interior lighting helps with loading and unloading the care utensils and makes it easier to check the results – at any time of day or night.

### The benefits of the new cleaning system:

- Hygienically safe cleaning, inside and out
- More resource efficient than the previous model
- Easy care utensil handling – even on the night shift, thanks to interior lighting



The wash chamber and nozzles have been adapted so as to significantly increase the intensity of the wash.



Our stainless steel wash arm was already a winning move in MEIKO warewashing technology. But in the MEIKO *TopLine* range, it has been adapted to perfectly suit its new task.



The telescopic rotary jet was already tried and tested in the previous model. Now, the optimised wash mechanism and rotation monitoring provide even better results.



## INTUITIVE GLASS OPERATING PANEL

When it is running, the MEIKO *TopLine* monitors its systems and functions – and communicates what it finds via the progress bar and status on the glass display.

The blue operating concept on the MEIKO *TopLine* provides an at-a-glance overview at every point in the cleaning process: only the elements and functions lit in blue at any moment can be used or selected.

### Benefits of the glass operating panel:

- Clearly guides the operator through the menu
- Intuitive one-touch operation can be configured
- Easy-to-clean safety glass



One-touch operation makes it easy for the user to navigate through the programme options.



All functions are represented using self-explanatory icons.



When the lighting elements on the display turn green, the MEIKO *TopLine* is currently running a cleaning and disinfection cycle.



The dynamic progress bar shows how much of the cleaning programme has already been completed.



## AUTOMATIC DOCUMENTATION

Are the care utensils clean? This query runs after every cleaning and disinfection cycle so that cleaning performance is automatically documented and the system can monitor for repeated negative responses. In these cases, the in-house technician is informed and the underlying problem can be remedied.

## LIGHT-UP SIGNAL CONCEPT

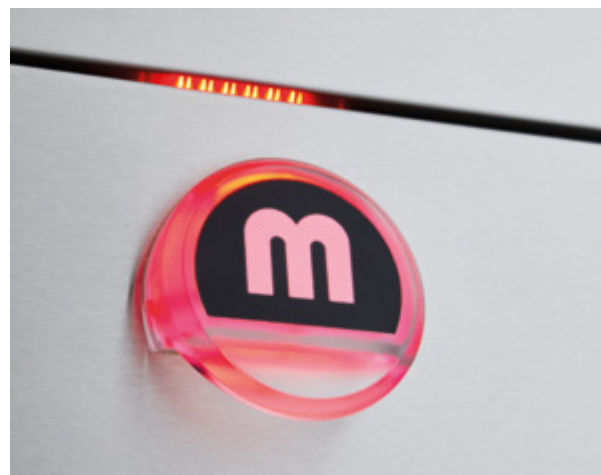
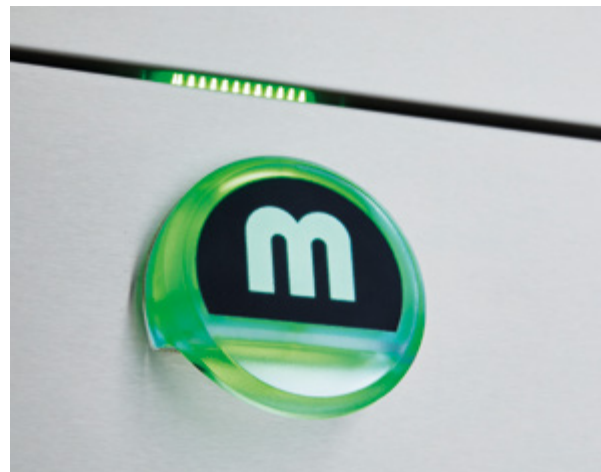
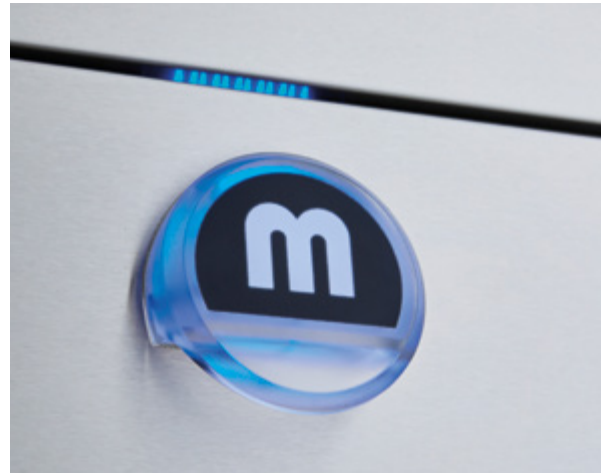
The MEIKO signal concept features a modern design and plenty of functionality. Blue = ready. Green = cleaning and disinfecting. Red = important message. Even from a distance, the illuminated door handle and lighting elements on the operating panel show care staff whether the machine is still running or is ready to be unloaded.

### Benefits of the indicator handle:

- Optimum communication between human and machine
- Saves time because operating status can be seen from a distance – even on the night shift



If your version features automatic door opening and closing, the hand sensor will light up in blue when the machine is ready for operation, matching the blue operating concept.



The machine clearly and visibly communicates its status: ready for operation (blue, if the door is manual), cleaning (green), important message (red).

# MEIKO TopLine – connectivity



## CONNECT USING MEIKO CONNECT

The app allows you to view and manage all relevant data from the MEIKO *TopLine*. Through connectivity via Bluetooth, LAN or WLAN, your in-house technician will receive a notification when an error message appears on the machine.

### The benefits of *MEIKO Connect*:

- View all the information (process settings, error and information messages, etc.)
- Stay informed even outside of the utility room
- Daily protocol with assured, documented hygiene results
- Quick troubleshooting



Simply download the app and call up the data from your MEIKO *TopLine* via Bluetooth, WLAN or LAN on your smartphone, tablet or laptop.



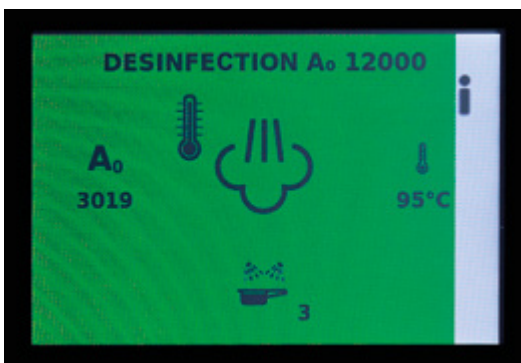


## READY FOR THE FUTURE

Hygiene requirements are becoming ever stricter. Where will that trajectory take us? With the new generation of MEIKO *TopLine* appliances, you don't need to worry about that. You see, we have already thought about this question – and we created a range of machines that not only fulfil current hygiene requirements, but are equipped for future ones thanks to the following features.

### The hygiene benefits of the new MEIKO *TopLine*:

- $A_0$  value adjustable as per DIN EN ISO 15883 – up to 12,000!
- Contact-free workflows using a combination of load detection and automatic door opening and closing (p. 4)
- Improved cleaning results with the optimised cleaning system (p. 5) and routine queries (p. 6)
- Process monitoring using the *MEIKO Connect* app (p. 8)
- Improved process safety with easy-access mains isolator (complies with DIN EN 61010, IEC 60947-1 and IEC 60947-3)



Using the MEIKO *TopLine* with an  $A_0$  value of 12,000, you are ahead of your time – and ready for the future.



## QUIETER, EASIER, FASTER, MORE EFFICIENT

The new MEIKO *TopLine* range has been developed to meet the challenges and stresses of your day-to-day work – these appliances help out the care staff wherever they can. That makes their work a bit easier, more pleasant, more efficient and even safer.

### The following features achieve this:

- Automatic programme selection using load detection (optional) (p. 4)
- Improved infection prevention with automatic door opening and closing (optional) (p. 4)
- Safe, reliable operation using intuitive menu (p. 6)
- More convenient operation and more efficient processes thanks to signal concept (p. 7)
- Easy to check cleaning results thanks to interior lighting in wash chamber (p. 5)
- Run more cycles as programme run time are shorter (depending on programme and  $A_0$  value, up to 18% time savings as compared to the previous model)
- Minimal background noise and machine volume reduced
- Savings (depending on on-site conditions, up to 15% water and 20% power as compared to the previous model)\*



There is no longer any need to provide an on-site mains isolator close to the machine because it is already built into the MEIKO *TopLine* as standard.

Be on the safe side: with drying and recooling system that uses filtered air, alongside system disinfection for all water lines to prevent re-contamination.

\* All figures stated regarding savings are maximum values. Loading and operation type (continuous or sporadic use), temperature of water intake and cleaning programme selected, as well selected  $A_0$  value, all impact appliance energy and water consumption.

**Step 1:** Open wash chamber door: either manually or, if your version features automatic door opening and closing, using the hand sensor or foot switch (optional).



**Step 2:** Load care utensils, with their contents, and close wash chamber door (same way as in step 1).



**Step 3:** Take a quick look at the display: is the programme selected by the MEIKO TopLine correct?



**Step 4:** Following a countdown, the programme starts automatically. Visible when the colour changes to green.



**Step 5:** End of programme, shown by a colour change to blue: the wash chamber door can be opened the same way as in step 1 and the cleaned and disinfected care utensils can be removed.

**Step 6:** On versions with routine query function (optional), the user assesses the cleaning result while unloading the care utensils – finished!



# MEIKO TopLine – all-round carefree package

## YOUR ONE-STOP PROVIDER

We will support you at every stage – from planning services through to machine installation and maintenance and beyond to

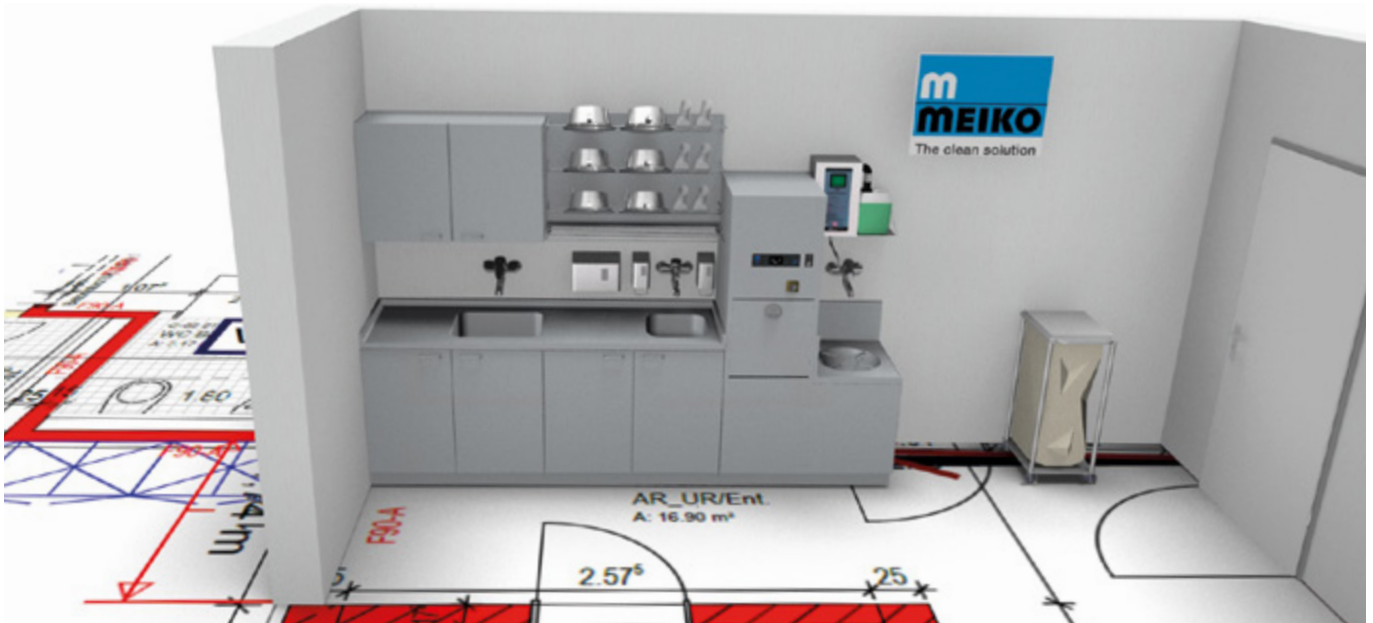
staff induction and training with the necessary chemical products – ensuring that you never have to compromise on hygiene.

## MEIKO PLANNING: TAILOR-MADE SOLUTIONS

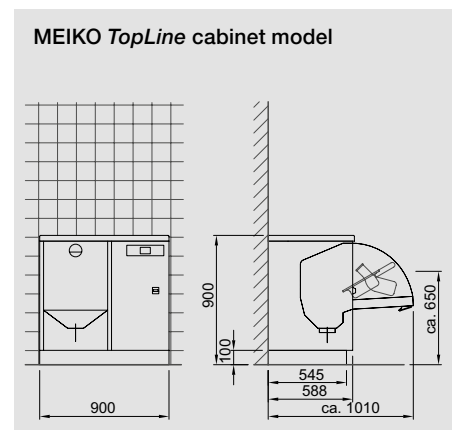
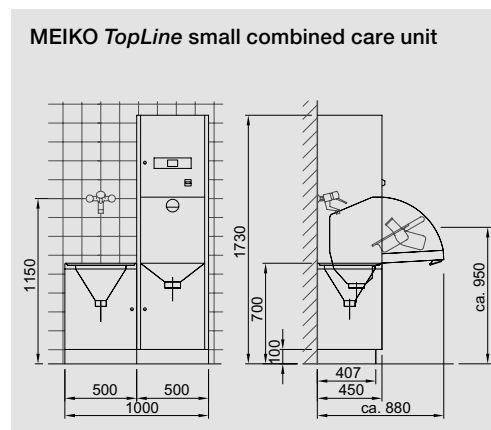
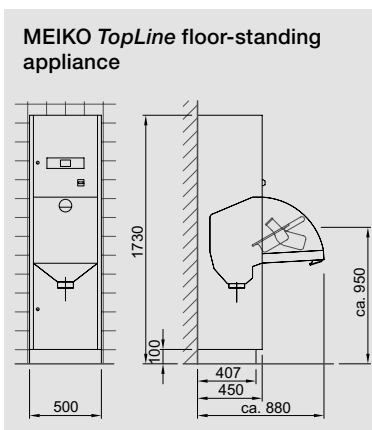
MEIKO *TopLine* appliances come in a variety of different configurations, so there's something to suit every utility room. From individual floor-standing, wall-mounted or flush wall-mounted appliances to practical cabinet models and compact combined care units. You can choose the tailor-made solution that meets your needs.

## Benefits of MEIKO planning:

- Clean solutions, made to measure. For refits, renovations or new builds
- Brings together hygiene safety and workplace optimisation



In addition to our MEIKO cleaning and disinfection technology, we also offer a wide range of furnishings for safe and ergonomic work practices.



**MEIKO DOYEN PRODUCTS: WE'VE GOT CHEMISTRY**

To achieve perfect cleaning results, the technology, detergent (optional) and rinse aid have to be suited to one another. That is exactly what happens with Doyen products by MEIKO. They are approved specifically for use in the cleaning processes of MEIKO *TopLine* appliances.

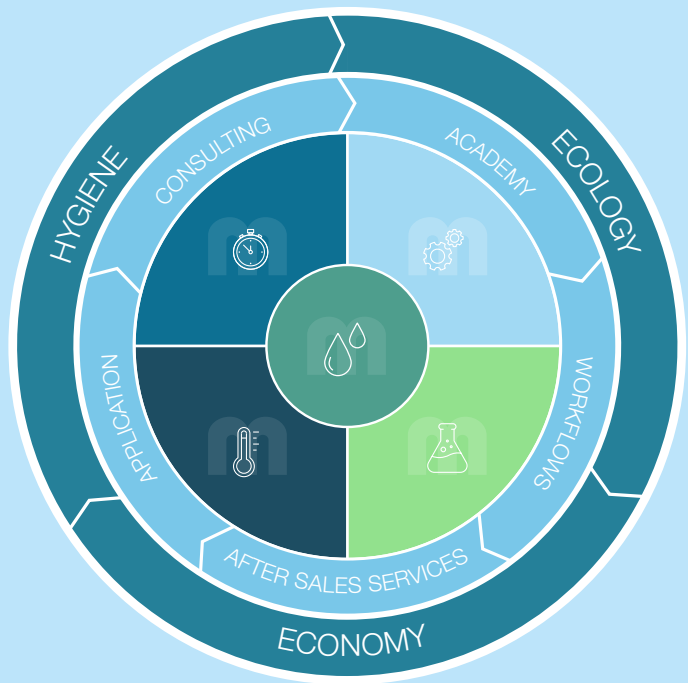
**Benefits of MEIKO chemical products:**

- Approved for use in MEIKO *TopLine* appliances
- Optimum dosing quantities which are kept as small as possible
- Tested for compatibility with materials
- NEW: detergent dosing system is now even easier to retrofit
- NEW: safe chemical dosing process thanks to automatic ventilation of dosing systems

**MEIKO CLEAN SOLUTION CIRCLE**

**A single source:**

The *MEIKO Clean Solution Circle* brings in all relevant parameters for the cleaning process and their relationships and dependencies on one another. In the centre is cleaning performance, symbolised by 'Sinner's circle' (time, temperature, mechanical elements, chemicals). Yet only with the right consulting and use, the right services and workflows, and training from the *MEIKO Academy* does the complete, holistic picture come into view. Then hygiene, environmental considerations and economy are assured.



**MEIKO SERVICE: EXCELLENT ORGANISATION AND ON SITE IN A JIFFY**

Our service team pride themselves on quick response times, short distances to travel and good availability of spare parts in their vehicles.

**Benefits of MEIKO Service:**

- 365 days a year, 24/7 service hotline
- Authorised service technicians (through the MEIKO Academy)
- NEW: improved structure and access for better service
- NEW: more durable materials for machines that last longer



The *MEIKO Academy* trains MEIKO employees and offers courses. Operators and their staff can access online learning content. All of this improves user safety and confidence.

## MEIKO TopLine – model overview



### MEIKO TopLine 10

The MEIKO *TopLine 10* is compact, measuring 500 mm x 450 mm x 1,630 mm (W/D/H), and is mounted on the wall to give you the benefit of floor clearance – for even better hygiene in the area surrounding the appliance. The area can be cleaned easily, with no tricky corners.

### MEIKO TopLine 20

Quick to install and commission: the MEIKO *TopLine 20* is floor-mounted using a plinth, meaning it is quickly ready for use. Simply place it in position and connect it up. Dimensions of 500 mm x 450 mm x 1,730 mm (W/D/H) and a convenient working height make this model pleasant and ergonomic to work with.



## MEIKO TopLine 30

A ready-to-connect installation unit, the MEIKO *TopLine 30* almost completely disappears behind the tiled wall. This model fits flush to the wall and features an additional central connection for any standard WC. This saves huge amounts of space and is suited to installation in patient ensuite bathrooms or isolation rooms.



## MEIKO TopLine 40

The MEIKO *TopLine 40* cabinet model measures 900 mm x 600 mm x 900 mm (W/D/H) and is the perfect addition to any existing utility room set-up. This is the compact solution you need if some additional work surface is requested.



The clean solution



Manufacturer:  
**MEIKO Maschinenbau GmbH & Co. KG** · Englerstr. 3 · 77652 Offenburg, Germany  
Phone +49 781 203-0 · [info@meiko-global.com](mailto:info@meiko-global.com) · [www.meiko-global.com](http://www.meiko-global.com)



720.070.02.10.23/TLM2/EN/EPP/500

We reserve the right to amend specifications as part of our product improvement process